



# FORTUNA

"From Concept To Completion"

AN OVERVIEW ON WHAT WE DO



# FORTUNA HISTORY

---

- 2000** Fortuna opened as a small importer of Italian specialty food products catering Italian restaurants and Pizzerias.
- 2004** Our first warehouse was purchased to accommodate the growth of imported espresso distribution and specialty coffee products, catering primarily to independent coffee shops.
- 2010** We bought a small local roasting company and started roasting in-house, providing more than 20 single origins and coffee blends at the time.
- 2011** We hired our first interior and graphic designer to assist new coffee shop clients with floor plan designs and brand development. The company grew at least 20% year after year, providing coffee shop designs, equipment, and over 3,000 specialty products to clients all over the Southeast.
- 2021** Fortuna purchased a 65,000 sq. ft. facility, continuing to grow even during a pandemic.
- 2024** Fortuna finishes building their state-of-the-art coffee bar for training customers on product and equipment.

# OUR SERVICES



## DESIGN

Hospitality Design +  
Materials Selection

3-D Renderings

Equipment Layouts,  
Floor + Lighting Plans

Industrial Design +  
Custom Fabrication

Photography + Video

Marketing +  
Advertising

Graphic Design +  
Branding

Web Design

## SUPPLY

Commercial Kitchen  
Equipment

Merchandising

Low-Cost Handling,  
Shipping, + Delivery

Product Sourcing

Food + Beverage  
Products

Lighting, Furniture, +  
Decorative Materials

On-Site Storage +  
Warehousing

Equipment Specialists

## COFFEE

Specialty Coffee  
Roasting

Barista Training

Menu Building

Front-of-House  
Products

Custom Blends +  
Labeling

Coffee Consultation

Premium European  
Espresso Machines

Coffee Equipment  
Installation + Repair

# THE DESIGN TEAM

---



Kitchen Designers

Interior Designers

Project Managers - FF&E

Equipment Specialists

Graphic Designers

**Over 1,000** of shop locations designed over the past 15 years!

Local, Statewide, and Nationwide

Ranging from small "mom & pop" shops to large catering cafeterias and event centers

**ALL** food service businesses: *coffee shops, restaurants, fast food, fine dining, bakeries, wineries, food trucks, etc.*

# TABLE OF CONTENTS

---

- **Interior Design**
- **Commercial Kitchen Design**
- **Graphic Design**
- **Products**
- **Coffee**
- **Full-Scope Projects**

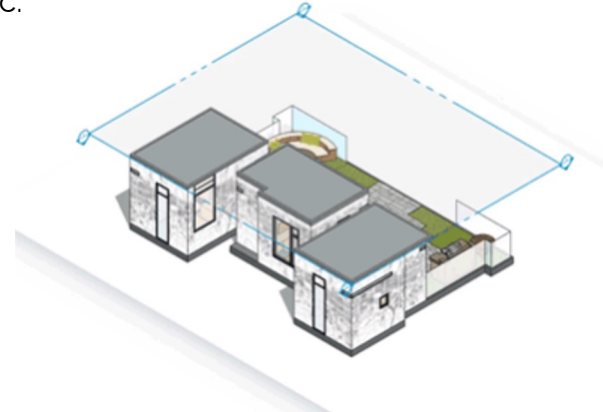




# INTERIOR DESIGN

# INTERIOR DESIGN

- **Concept Development**
  - Cohesive brand portrayal through interior design elements
  - Problem solving stage
  - Research innovative solutions
- **Materials, Furniture, Fixtures Selections & Procurement**
  - Decorative materials - flooring, wall tile, laminates, countertops, etc.
  - Restaurant furniture - tables, chairs, barstools, booths, benches, etc.
  - Fixtures - decorative and task lighting fixtures
- **3D Model and Renderings**
  - Communicates clear intention and functionality of space
  - Easy visual aid of the concept and vision prior to ordering
  - Saves time and energy by providing a clear vision to work towards





**COFFEE SHOP | High Point, North Carolina**



**MOBILE COFFEE UNIT | Throughout North Carolina**



**COFFEE + TEA SHOP | Jamestown, North Carolina**



**FOOD HALL | Columbus, Ohio**



**RETAIL SPACE | Columbus, Ohio**



**CAFÉ | Raleigh, North Carolina**



**CONCESSION AREA | Corpus Christi, Texas**



**COMMERCIAL KITCHEN DESIGN**

# COMMERCIAL KITCHEN DESIGN

---

- **Health Department Consultation**

- In house consultation with former director of the Guilford county Health Dept.
- Evaluation of existing kitchens and equipment pieces
- Liaison between the Health Dept and the client
  - Assistance in Application submittal and plan review process

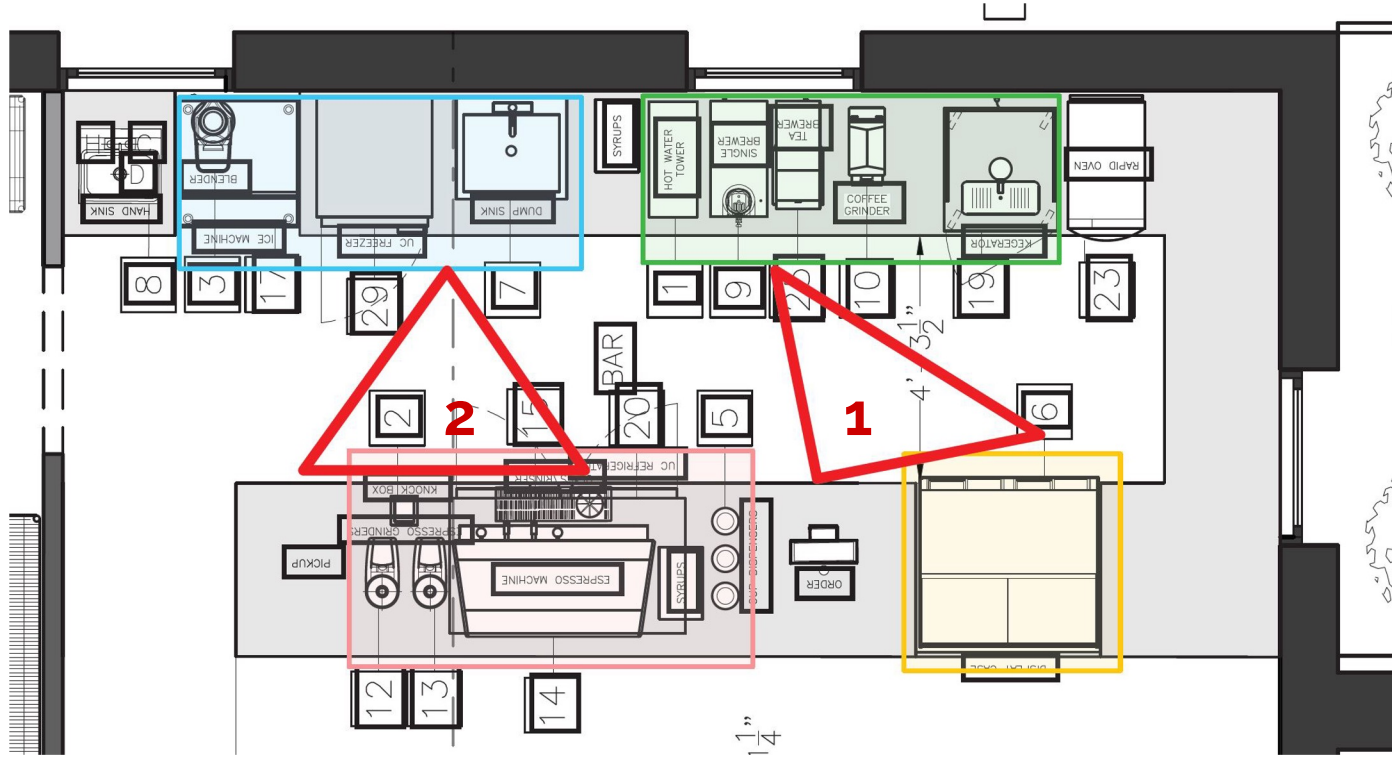
- **Equipment & Supporting Plans**


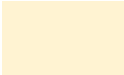

- Layout of kitchen based on studied workflow & customer needs
- Equipment plans drafted per health requirements
- Plumbing and electrical reference plans for installation

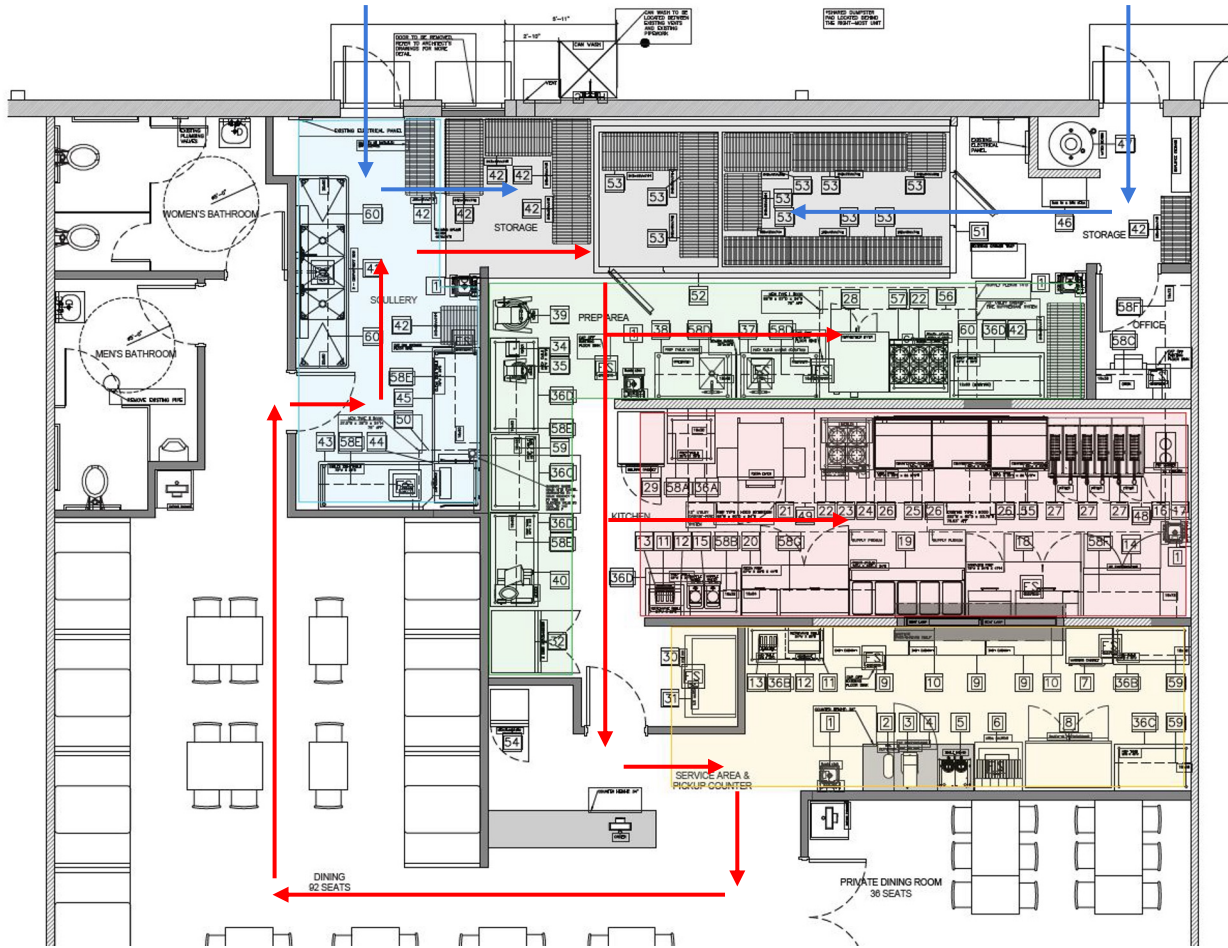
- **Equipment Selections & Procurement**

- Best value brand recommendations
- Great vendor relationships
- Handled inhouse - Order, storage, delivery, and maintenance

# LEGEND



-  BLEND
-  DISPLAY
-  POUR + GO
-  ESPRESSO



## LEGEND

- SCULLERY
- STORAGE
- PREP
- COOKLINE
- SERVERY
- CIRCULATION
- DELIVERY INTAKE

**ITALIAN RESTAURANT | Greensboro, North Carolina**



2758



**GRAPHIC DESIGN**

# GRAPHIC DESIGN

---

- **Brand + Visual Identity Development**

- Bringing clients' visions to life via the power of storytelling in design
- Provide name options with supporting brand story material (tagline, mission, etc.)
- Professional brand guidelines established with:
  - Color palettes, typography, logo variations, motifs, brand story, etc.

- **Marketing Material**

- Our team will research and learn your brand and competitors to provide strategic solutions for marketing.
  - Ranges from digital (social media and web) to print (signage to vehicle wraps, branded apparel to packaging)
- Printed Examples:
  - Menus, Business Cards, Letterheads, Signage, Vehicle Wraps, Packaging, Posters, etc.
- Digital Examples:
  - Website Layout Design, Photography, Video, Social Media Templates, etc.

- **Custom Branded Merchandise**

- We take the time to understand your needs and brand to provide the best custom branded solutions – the possibilities are endless!
  - Stickers, T-shirts, Aprons, Hoodies, Hats, Lanyards, Beanies, Chap Sticks, Coffee Sleeves, etc.



# JOY COFFEE COMPANY: BRANDING + PRINT



## COFFEE

	HOT	ICED
ESPRESSO (double shot)	1.75	-
SHAKEN ESPRESSO	-	3.25
AMERICANO	3.45	3.95
CAPPUCCINO	4.35	-
FLAT WHITE	4.35	-
LATTE	4.35	4.85
MOCHA	5.35	5.85
DRIP COFFEE	2.65	-
RED EYE	3.15	-
COLD BREW	-	5.35

## SPECIALTY LATTES

CINNAMON ROLL LATTE	5.50	6
LAVENDER LATTE	5.50	6
HONEY BEE LATTE	5.50	6
SPICY MOCHA	5.50	6

## OTHER

HOT CHOCOLATE	4.25	-
STEAMER	4.15	-
CHAI TEA LATTE	5.35	5.85
MATCHA LATTE	5.35	5.85
TEA	3.95	4.45
black, green, herbal		
LOTUS ENERGY DRINK	-	5.75
peace, harmony, serenity, love		
LOTUS LEMONADE	-	5.25

lotus power up +1.00 | lotus cream +0.75

#CHOOSEJOY  
@JOY.COFFEE  
JOYCOFFEECOMPANY

## EXTRAS

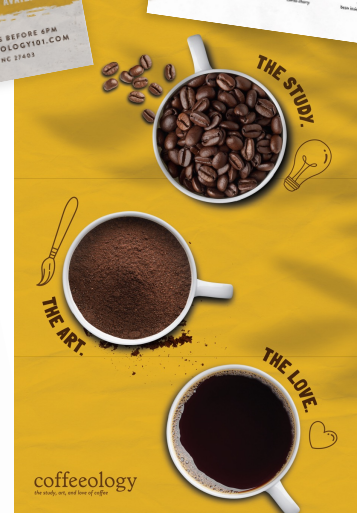
alt. milk +1.00 | espresso shot +1.00 | flavor +0.75

ASK ABOUT OUR SYRUP FLAVORS!

# COFFEEOLOGY: PRINT + DIGITAL

[Click to view website design.](#)

SOCIAL MEDIA FEED



# PRAIRIE DOGS: BRANDING + PRINT



# SALON MIDTOWN: BRANDING + PRINT + DIGITAL

[Click to view website design.](#)



# ENVIRONMENTAL PHOTOS



# PRODUCT PHOTOS



# BRANDED MERCHANDISE + PRODUCTS



TUMBLER + HAT + WINE STOPPER + COFFEE + T-SHIRT + MORE



# PRODUCT

# PRODUCT/WAREHOUSE

- **Over 3,000 products and growing**
  - Flavoring syrups
  - Milk alternatives
  - Frappe powders
  - Smoothie mixes
  - To-Go disposable products
  - Barista tools
  - Coffee
  - Tea
  - And so much more!





**COFFEE**



# COFFEE PROGRAMS

---

- **Barista Training**
  - Brewing Essentials
  - Coffee Foundations
  - Barista Foundations
  - Brewing Foundations
  - Latte Art
  - Sensory Development
  - Workflow and Efficiency
- **Establish consistent and positive practices**
- **Build and refine skills from foundational learning**



# FORTUNA

“FROM CONCEPT TO COMPLETION” PROJECTS

*PROJECTS INVOLVING ALL DEPARTMENTS OF FORTUNA*



**BILLY D'S**

THROUGHOUT NORTH CAROLINA



**BILLY D'S - RENDERINGS: North Carolina Zoo**



**BILLY D'S - PHOTOGRAPHY**



**BILLY D'S - BEFORE & AFTER**



**BILLY D'S - BRAND GROWTH: Elon University**



FRESH  
HOT 'N' CRISPY  
FRIED CHICKEN

Fried  
LOCAL CHICKEN  
RAISED RIGHT

**BILLY D's**  
Fried CHICKEN



NORTH CAROLINA  
RAISED RIGHT

QUALITY  
GUARANTEED

BILLY D's FRIED CHICKEN  
2017



**BILLY D'S - GRAPHICS PACKAGE**



**KETCHIE CREEK**

Clemmons, NC



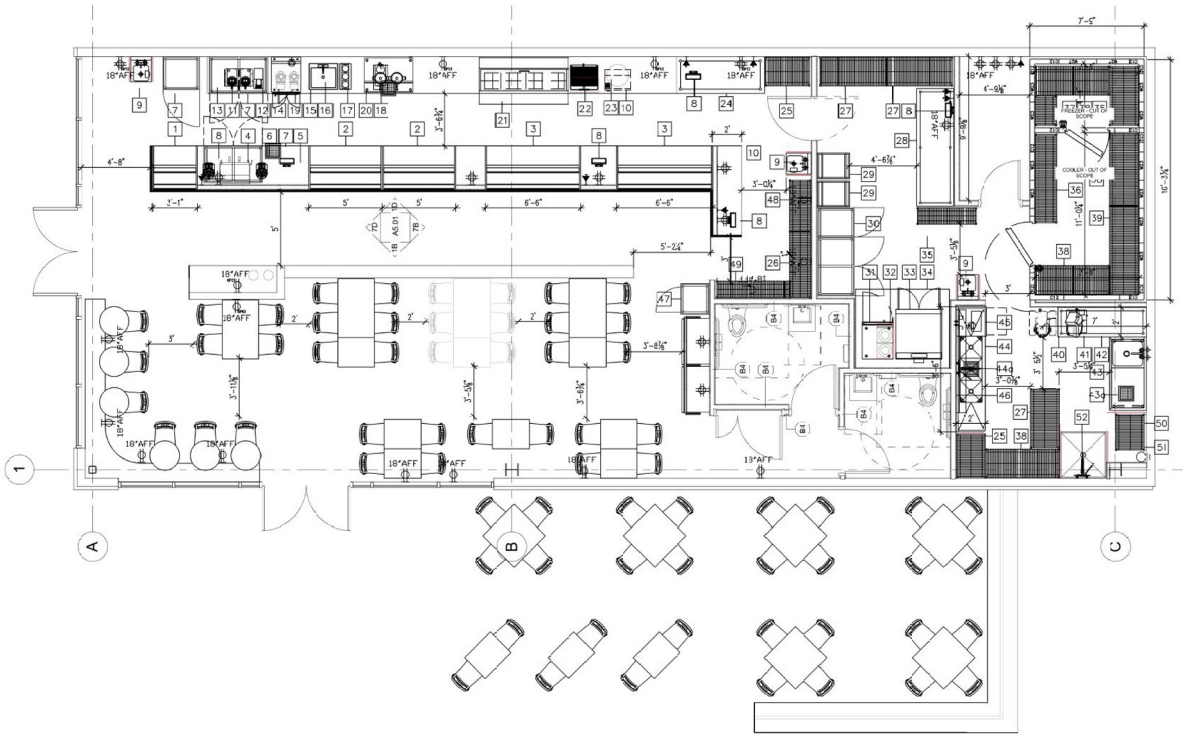
**KETCHIE CREEK BAKERY & CAFÉ - RENDERINGS**



**KETCHIE CREEK BAKERY & CAFÉ - RENDERINGS**

EQUIPMENT SCHEDULE

NO.	DESCRIPTION	MANUFACTURER	MODEL NO.	QTY	UNIT PRICE	TOTAL PRICE	REMARKS
1	Non-Refrigerated Case Display	Facorol Industries	8003848	1.5	120	NEW	
2	Non-Refrigerated Case Display	Facorol Industries	8003848	1.5	120	NEW	
3	Refrigerated Case Display	Facorol Industries	8087748	14.2	120	NEW	
4	Coffee Grinder	Cozzoli	ES	1	110	NEW	
5	Coffee Grinder - Decaf	Cozzoli	ES	7	110	NEW	
6	Espresso Machine - Two Group	Cimato	W68	17.8	240	O.S.	NEW
7	Undercounter Refrigerator	Beverage Air	UC846AK	2.2	120	NEW	
8	POS	POS		2	10	NEW	
9	Food Sink	IK Resources	RH45-0-15-P-G	0.5	6.5	NEW	
10	Platinum Steel Touch Control Microwave	Winn	WM-100ST	12	120	NEW	
11	Coffee Brewer	Falco	11520V	28	240	O.S.	NEW
12	Coffee Grinder	Bunn	CS HD	11	120	NEW	
13	Manual Juicer	Rotini Junior				NEW	
14	Blender	Convection 825			120	O.S.	NEW
15	Pump Sink	IK Resources	FS-2018 1224-P-G	0.5	6.5	NEW	
16	Hand Fryer	Blawie	BF-412	5/8		NEW	
17	Dual Soap Coffee Dispenser	Summit	80053M2MMW	0.88	115	NEW	
18	Ice Brewer	Bunn	MT00-0089 TR3 J	14.4	120	O.S.	NEW
19	Reach-in Undercounter Freezer	Beverage Air	UC2729AK	6	115	NEW	
20	Ice Maker and Bin Square Cuber w/ built-in storage	Hostalid	14-2008AB	7.5	115	O.S.	NEW
21	Sandwich Prep Unit	Beverage Air	SPED72HC	3	115	NEW	
22	Electric Countertop Sandwich Grill	Winn	855-2	19	120	NEW	
23	Electric Soup Warmer	Winn	ESW-70	3.3	120	NEW	
24	Stainless Steel Table with 5" Rear 30" x 72"	IK Resources	157H 3072			NEW	
25	Wire Shelving 24" x 30"	Neal	2438			NEW	
26	Wire Shelving 18" x 24"	Neal	1824			NEW	
27	Wire Shelving 24" x 54"	Neal	2454			NEW	
28	Stainless Steel Table with 5" Rear 30" x 80"	IK Resources	157H 3086			NEW	
29	24" x 20" Case Rack	Winn	ARR-20			NEW	
30	Three-Door Reach-in Refrigerator	Beverage Air	RR3-15	10	115	NEW	
31	Food / Holding Cabinet	Mofid	FI0M	11.8	120	NEW	
32	Single & Double Induction Range Series	Mofid	MR80	15	120	NEW	
33	Double Stacked Convection Oven	HarPro	CS84	25	120	NEW	
34	Food - 6" x 2" x 5" x 4"	Cozzoli				NEW	
35	Wire Shelving 24" x 48"	Neal	2448			NEW	
36	Wire Shelving 18" x 24"	Neal	1824			NEW	
37	Wire Shelving 18" x 24"	Neal	1824			NEW	
38	Wire Shelving 24" x 80"	Neal	2480			NEW	
39	Wire Shelving 24" x 24"	Neal	2424			NEW	
40	Planetary Dough Mixer	Sen-Ware	FW10LA	1-2	115	NEW	
41	Meat Slicer	Strom USA	Known 303 Advanced	3	120	NEW	
42	Stainless Steel Table 24" x 64"	IK Resources	RP7-6424			NEW	
43	Work Table with Sink	IK Resources	RP7-3000-L	0.5	6.5	NEW	
430	1 1/2" Splash Mount Pre-Rinse	IK Resources	RP7-348P-WB-G	0.5	6.5	NEW	
44	Three-Compartment Sink	IK Resources	RS-3-18-12-24E	0.5	6.5	NEW	
443	1 1/2" Splash Mount Heavy Duty Faucet	IK Resources	RP7-G	0.5	6.5	NEW	
45	Undercounter High Temp Dishwasher	Mold Diner	SD3H	22-21	115	NEW	
46	Wall Sinks with 74" Back Stainless Steel	IK Resources	RH65-1240-PB			NEW	
47	Reach-in Drink Merchandiser	Soco - Cole	-	3-4.2		Provided by Client	
48	Wire Shelving 18" x 48"	Neal	1848			NEW	
49	Wire Shelving 18" x 60"	Neal	1860			NEW	
50	Wire Shelving 18" x 30"	Neal	1830			NEW	
51	Wire Shelving 24" x 30"	Neal	2430			NEW	
52	Can Wash Lines Faucet	IK Resources	RP5F-WB1	0.5	6.5	NEW	



KETCHIE CREEK - COMMERCIAL KITCHEN PLANS

## trays

Minimum of 6 people. Includes paperware

Order any tray as a full tray to let your guests build their own sandwiches!

**Sandwich Tray**  
2.80/person  
2.80/person  
A budget friendly option that is perfect for parties, luncheons & office meetings. Includes an assortment of our hearty sandwiches. Add sides, drinks & dessert at an additional cost & you're all set!

**Sandwich Tray w/ Sides**  
3.60/person  
3.60/person  
Includes an assortment of sandwiches with your choice of 1st or 2nd choice sides. You can add drinks & dessert at an additional cost.

**Boxed Lunches**  
1.20 each  
1.20 each  
Includes your choice of sandwich, side, cookie, & pickle. These are ordered in bulk & cannot be individualized.

**salads**

**Chef Salad**  
8.95/person  
8.95/person  
Ham, turkey, cheese, veggies, & your choice of dressing.

**Other Salads**  
Add \$1.00  
Add \$1.00/person  
Sall individually. Reference our regular menu for options.

**Dressings:**

- Ranch
- Italian
- Mustard
- Caesar
- White Balsamic
- Cheddar Mustard
- Barbecue Vinaigrette
- Southwest Ranch
- 1000 Island

**Details**  
All sandwiches include your choice of bread & trimmings. Served with a pickle spear. Sides purchased with a tray are provided at 1/4 pound portions per person.

**Sandwiches:**

<b>Black Forest Ham</b> Swiss cheese & corned beef	<b>Italian</b> Thin sliced ham, provolone cheese, tomato sauce
<b>Deluxe Ham</b> Swiss cheese & provolone	<b>Chicken Salad</b> Cheddar cheese
<b>Orange-Glazed Turkey</b> Swiss cheese & provolone	<b>Fresh Tuna Salad</b> Cheddar cheese
<b>Orange-Glazed Turkey &amp; Ham</b> Swiss cheese & provolone	<b>Veggie</b> Cheddar cheese
<b>Cooked Pepper Turkey</b> Swiss cheese & provolone	<b>Pesto Cheese</b> Cheddar cheese
<b>Deluxe Beef Steer</b> Swiss cheese & provolone	<b>Roast Beef</b> Cheddar cheese
<b>Deluxe Deli Sandwich</b> Swiss cheese & provolone	<b>Egg Salad</b> Cheddar cheese & pickles

**Breads:**

- Soft Dough
- Rolls
- Hard Roll
- Whole Wheat
- Gluten Free

**Trimming:**

- Swiss Cheese
- Cheddar Cheese
- Provolone Cheese
- Pepperoni
- Ham
- Salami
- Roast Beef
- Hot Italian Sausage

**Sides:**

- Cheddar Bacon
- Hot
- Bruschetta
- Tomato
- Onion
- Pasta Salad
- Salad
- Hot Sauce

EST 1983

# KETCHIE CREEK

BAKERY • DELI • COFFEE

## we are family

After purchasing Ketchie Creek Bakery & Cafe in 2016, husband and wife team Gerald and Renee Wellman wanted to maintain its tradition and inclusive values. Marketers and the surrounding area. Being a young family themselves, they realized the importance of a strong and thriving community... and they desired to preserve Ketchie Creek's deeply rooted reputation as Owen County's premier bakery and cafe while exploring new ways to meet the needs of their customers.

In 2021, Renee and Gerald opened a fresh-antiquated second location in Clemmons. They are interested both personally and professionally in the area, are active in the local business community, and support many non-profit and charitable organizations throughout the Triad.

The Wellman parents for their products, their employees, and their community with them. They desire to create a warm, welcoming atmosphere while providing the highest quality food and drinks for their families. Cold & Humid weather throughout the Triad. They are devoted to creating a family-oriented work environment and hope that their faithful employees are truly their greatest assets.

Above all, the Wellman seek to serve their loyal customers and remain grateful for their support in helping them grow and continue the tradition of Ketchie Creek within the wonderful towns of Marketers and Clemmons.

## breakfast

Minimum of 6 people

**Continental Breakfast Tray**  
4.25/person  
4.25/person  
Includes an assortment of our fresh-baked breakfast pastries & muffins. Add fruit, juice, or coffee at an additional cost to complete your breakfast!

**Fruit Tray**  
3.80/person  
3.80/person  
Includes a beautiful arrangement of our best seasonal fruit.

**Fruit Dip**  
4.50/person  
4.50/person  
A light, sweet, vanilla flavored dip that enhances the full tray experience. Each joint serves approximately 10-12 people.

**veggie tray**

**Veggie Tray**  
6.80/person  
6.80/person  
Includes an assortment of fresh seasonal vegetables w/ ranch.

**dessert tray**

Minimum of 6 people

**Dessert Tray**  
Includes a bite-size assortment of our most popular desserts such as cold brownies, lemon squares, cream bonns, & more!

50pc - \$2.00  
40pc - \$1.60  
30pc - \$1.20  
18pc - \$1.80

**desserts**

Gluten-Free cupcakes, brownies & cookies are available

**Single Desserts**

- Tray Tray
- Hard Brownie
- Chocolate Brownie
- Chocolate Chunk Cookie
- Mint Chocolate
- Cookie Bar
- Chocolate Macaron
- Chocolate Brownie
- Chocolate Brownie
- Chocolate Brownie
- Cookie Dough Brownie

**Cookies**

- Tray
- Chocolate Brownie
- Chocolate Chunk
- Chocolate Chunk
- White Choc. Macadamia
- Snickerdoodle
- Chocolate Chunk
- Peppermint
- Butter Pecan
- Almond

**beverages**

Includes paperware

**Sweet or Unsweet Tea** 7.60/gallon  
7.60/gallon

**Lemonade** 13.60/gallon  
13.60/gallon

**Coffee Box** 16.95/box  
16.95/box  
Each box serves 12-15 people.

One 1/2 gallon serves 8-10 people.

**Assorted Juices** 1.99/person  
1.99/person  
Apple, orange, & flavor of the day.

**Bottled Drinks** 1.99/person  
1.99/person  
Blended Orangeade  
Cherry  
100% Blueberry  
Tangerine Orangeade

**delivery**

Please call for delivery information.

EST 1983

# KETCHIE CREEK

BAKERY • DELI • COFFEE

## catering

Have a sweet day anywhere!

Mocksville, NC  
646 Clemmons Drive  
336.757.9197

Clemmons, NC  
646 Clemmons Drive  
336.757.9198

www.ketchiecrekbakery.com



# KETCHIE CREEK BAKERY & CAFÉ - GRAPHICS PACKAGE



**BIG BURGER SPOT**

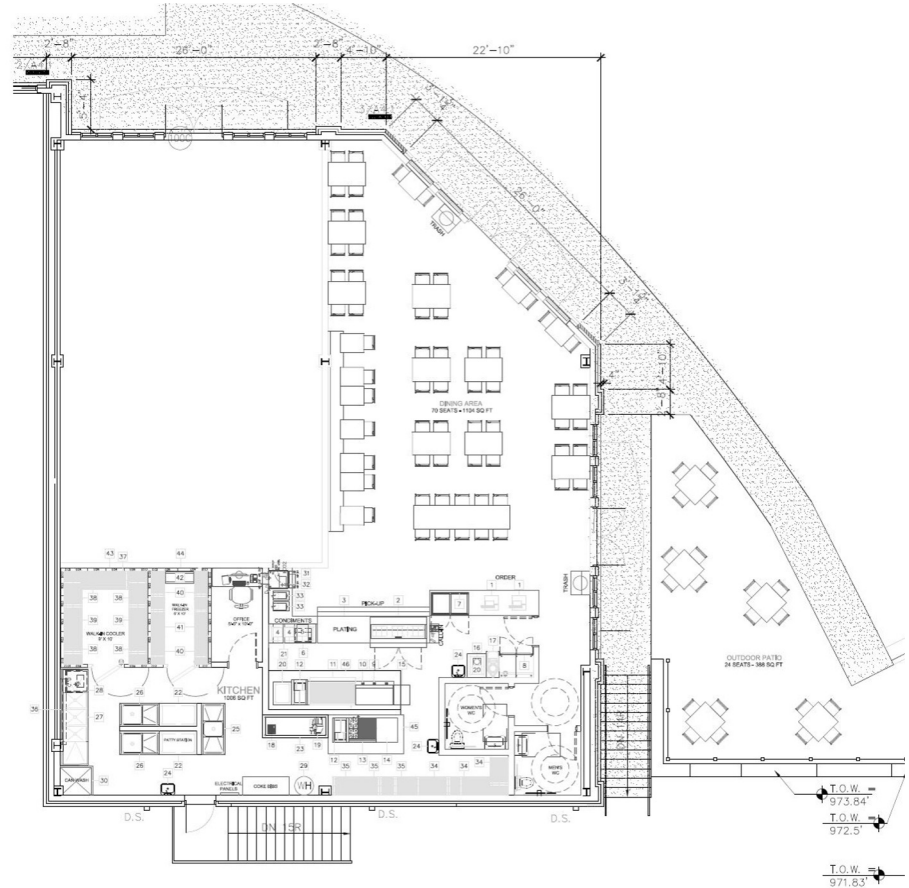
Kernersville, NC



**BIG BURGER SPOT - PHOTOGRAPHY**

# EQUIPMENT SCHEDULE

Item No	Qty	Equipment Category	Amps	Volts	Cold Water Size (in)	Hot Water Size (in)	Gas Size (in)	MAX. HGT. (ft.)	REMARKS
1	2	POS	2	10					NEW
2	1	Sandwich Prep Unit - BevAir - SPED72HC	3	115					NEW
3	1	Work Top Freezer - BevAir - WTB7AHC	8.89	115					NEW
4	2	Fry Holding Station - GRFFB	6.3	120					NEW
5	1	Countertop Warmer/Cooker - Winco FW-5600	12.5	120					NEW
6	1	Microwave Oven - Amana - RFS12TS	16	120					NEW
7	1	Refrigerated Merchandiser - True - TUC-48C-HC-SPEC1	3	115					NEW
8	1	Refrigerated Merchandiser - BevAir - MT49-1-SDW	8.3	115					NEW
9	1	Refrigerated Equipment Stand - True - TRCB-110	9.5	115					NEW
10	1	Countertop Griddle - Star - G48TF			3/4			1.132	NEW
11	1	VTECH Charbroiler - Valcon - VTEC60			3/4			1.1	NEW
12	2	Fryer - Asber - ADF-75 S-CAS			3/4			1.4	NEW
13	1	36" Range - Garland - G36-2024R			3/4			2.06	NEW
14	1	Smoker - Cocktail - SM250	20	220					NEW
15	1	Bread Pan - BK Resources - Bun Rack - BK-ABPR-1							NEW
16	1	Ice Cream Mixer - Vitamix - D571	2.6	120					NEW
17	1	Ice Cream Machine - Taylor - 358	22	208-230					NEW
18	1	Robot Coupe R402	9	120					NEW
19	1	Slicer	4	120					PROVIDED BY OWNER
20	2	Work Table - BK - SVTR-2430							NEW
21	1	Work Table - BK - SVTR-4824							NEW
22	2	Work Table - BK - SVTR-4830							NEW
23	1	Work Table - BK - SVTR-7230							NEW
24	3	Hand Sink - BKHS-0-1410-SS-P-G			0.5	0.5			NEW
25	1	One Compartment Prep Sink - BKS-1-1824-14-24T			0.5	0.5			NEW
26	2	One Compartment Prep Sink - BKS-1-24-14-24RS (LS)			0.5	0.5			NEW
27	1	Three-Comp Sink 10'-3"x3' - 20"x28" Bowls 30" Drainboards			0.5	0.5			NEW - CUSTOM
28	1	Underink Dish Washer - Moyer Diebel - 201LT	12	115		0.5			NEW
29	1	Energy Efficient Water Heater							PROVIDED BY OTHERS
30	1	Can Wash - 3'-0" x 3'-0"			0.5	0.5			NEW
31	1	Ice Maker - Manitowoc - RFF-0620A	20	115					NEW
32	1	Coca - Cola Fountain Machine							PROVIDED BY COKE
33	2	Tea Brewer	15	120	0.5	0.5			PROVIDED BY OTHERS
34	3	Dry Shelving - Nexel - 4'-0" S2448EP / P86P							NEW
35	3	Dry Shelving - Nexel - 3'-0" S2436EP / P86P							NEW
36	1	Drying Rack - Wall Mounted 63" - BK SSH-63							NEW
37	1	Shelving - Metro Max Q Series 24" x 24"							NEW
38	5	Shelving - Metro Max Q Series 36" x 24"							NEW
39	2	Shelving - Metro Max Q Series 48" x 24"							NEW
40	4	Shelving - Metro Max Q Series 36" x 18"							NEW
41	2	Shelving - Metro Max Q Series 48" x 18"							NEW
42	1	Dumpling Rack - 35" x 14"							NEW
43	1	Walk-In Cooler - 9'-8" x 10'-7 1/2"							NEW
44	1	Walk-In Freezer - 6'-9 1/2" x 10'-7 1/2"							NEW
45	1	Hood - 8'-0" X 5'-0"							NEW
46	1	Hood - 14'-0" x 5'-0"							NEW



## BIG BURGER SPOT - COMMERCIAL KITCHEN PLANS




**GUY BRADLEY**  
owner

336.317.1226

bigburgerspot@gmail.com



For Delivery & Pickup Orders  
order online at [www.bigburgerspot.com](http://www.bigburgerspot.com)

ASK US ABOUT  
OUR CATERING OPTIONS!

APPETIZERS & CHILI		SANDWICHES		DRINK MENU	
CHICKEN TENDERS <small>1/2 lb. of chicken tenders in a tangy sauce, 100, each in a large flour tortilla wrap</small>	\$5.99	MARINATED CHICKEN BREAST <small>1/2 lb. of chicken breast, marinated in a tangy sauce, 100, each in a large flour tortilla wrap</small>	\$4.99	PEPSI	\$1.99
HAWAIIAN CHICKEN <small>1/2 lb. of chicken breast, marinated in a tangy sauce, 100, each in a large flour tortilla wrap</small>	\$7.29	CHILI PEPPER	\$1.99	CHILI PEPPER	\$1.99
HOUSE MADE HUMMUS <small>1/2 lb. of hummus, 100, each in a large flour tortilla wrap</small>	\$5.99	MOUNTAIN PEW	\$1.99	MOUNTAIN PEW	\$1.99
HOT CHIPS <small>1/2 lb. of hot chips, 100, each in a large flour tortilla wrap</small>	\$4.99	CHEESEWINE	\$1.99	CHEESEWINE	\$1.99
HOUSE FRIED PORK RINDS <small>1/2 lb. of pork rinds, 100, each in a large flour tortilla wrap</small>	\$2.99	PINK LEMONADE	\$1.99	PINK LEMONADE	\$1.99
HOUSE MADE ANGUS BEEF CHILI <small>1/2 lb. of angus beef chili, 100, each in a large flour tortilla wrap</small>	\$4.99	SWEET ICED TEA	\$1.99	SWEET ICED TEA	\$1.99
		UNSWEET ICED TEA	\$1.75	UNSWEET ICED TEA	\$1.75
		BOTTLED WATER	\$1.99	BOTTLED WATER	\$1.99
		BOTTLED DRINKS	\$1.99	BOTTLED DRINKS	\$1.99

SALADS	
ALL-STAR SALAD <small>1/2 lb. of chicken breast, 100, each in a large flour tortilla wrap</small>	\$5.99
SIDE SALAD <small>1/2 lb. of side salad, 100, each in a large flour tortilla wrap</small>	\$3.99
COUSCOUS SALAD <small>1/2 lb. of couscous salad, 100, each in a large flour tortilla wrap</small>	\$3.99
GRILLED CHICKEN SALAD <small>1/2 lb. of chicken breast, 100, each in a large flour tortilla wrap</small>	\$7.99
GREEK SALAD <small>1/2 lb. of greek salad, 100, each in a large flour tortilla wrap</small>	\$7.99
SPINACH SALAD <small>1/2 lb. of spinach salad, 100, each in a large flour tortilla wrap</small>	\$7.99

FROM THE SMOKER	
CHICKEN BBQ <small>1/2 lb. of chicken breast, 100, each in a large flour tortilla wrap</small>	\$5.99
TEXAS STYLE BEEF BRISKET <small>1/2 lb. of beef brisket, 100, each in a large flour tortilla wrap</small>	\$6.99
SOUTHERN PHILLY <small>1/2 lb. of southern philly, 100, each in a large flour tortilla wrap</small>	\$4.99
CORNEED BEEF BRISKET <small>1/2 lb. of corneed beef brisket, 100, each in a large flour tortilla wrap</small>	\$4.99
REUBEN <small>1/2 lb. of reuben, 100, each in a large flour tortilla wrap</small>	\$4.99

CHILDREN'S MENU	
BURGER <small>1/2 lb. of burger, 100, each in a large flour tortilla wrap</small>	\$5.49
HOT DOG <small>1/2 lb. of hot dog, 100, each in a large flour tortilla wrap</small>	\$4.99
CORN DOG <small>1/2 lb. of corn dog, 100, each in a large flour tortilla wrap</small>	\$4.99
GRILLED CHEESE <small>1/2 lb. of grilled cheese, 100, each in a large flour tortilla wrap</small>	\$4.99
CHICKEN TENDERS <small>1/2 lb. of chicken tenders, 100, each in a large flour tortilla wrap</small>	\$5.49
CAROLINA PORK BBQ <small>1/2 lb. of carolina pork bbq, 100, each in a large flour tortilla wrap</small>	\$5.99
BURGER SPOT CLUB SANDWICH <small>1/2 lb. of burger spot club sandwich, 100, each in a large flour tortilla wrap</small>	\$4.99



**South of the Border**

**1 PICK YOUR BUN**

- TOASTED Brioche
- MULTIGRAIN
- GLUTEN FREE

**2 PICK YOUR SIZE**

- SMALL
- BIG
- COLLOSSAL

**3 PICK YOUR PATTY**

- ANGUS BEEF
- GROUND TURKEY
- BLACK BEAN
- CHICK PEAS

**Toppings:** SALSA, GREEN CHILI PEPPERS, CRISPY ONIONS, CHEDDAR BURGER, BUN

**By, Choose All Natural Grass-Fed Bison®**

Smoke House	Black & Blue	Mushroom Swiss
BUN: CRISPY ONIONS CHEEDAR PORK BBQ BURGER BUN	BUN: APPLEWOOD SMOCKED BACON BLUE CHEESE SAUCE SEASONED BURGER BUN	BUN: SWISS MUSHROOMS BURGER BUN
Smoke House	Black & Blue	Mushroom Swiss

Lonestar	Pimento Cheese	Hawaiian Chicken
BUN: HALAPENO PEPPER MUSHROOM CRISPY ONIONS PEPPER JACK CROPPED BEEF BRISKET BUN	BUN: TOMATO LETTUCE BACON PIMENTO CHEESE BURGER BUN	BUN: TERIYAKI SAUCE PINEAPPLE SWISS PORK LOIN CHICKEN BREAST BUN
Lonestar	Pimento Cheese	Hawaiian Chicken

**BIG BURGER SPOT - GRAPHICS PACKAGE**

**LET'S GROW TOGETHER!**

---

